

Fast HDMI DIY kit



It comes up with a better solution to insert wires. Our new DIY HDMI kit will show you the most efficient way to assemble a HDMI cable. Easier and faster.

Feature

- No soldering and environmental impact
- Less material loss
- No finished cables stocks
- Cater your own custom length as it requires for your project
- Take only few practices to master the DIY kit.

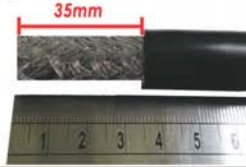


(Fig. A) Strip 35mm off the cable jacket.

(Fig. B) Fold back & trim off the excessive braiding without cutting the drain wire.

(Fig. C) Copper tape around the drain wire to reduce possible (EMI) ElectroMagnetics Interference & trim off the excessive drain wire under the copper tape if there is any.

(Fig. A)



(Fig. B)



(Fig. C)

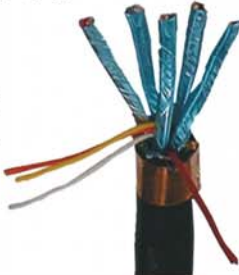


(Fig. A) Separate the 5 twisted pairs (4 pairs for TMDS data signals & 1 pair for HEAC HDMI Ethernet with Audio return Channel) you'll also see 4 stand-alone conductors.

(Fig. B) Trim 15mm off from the TMDS pairs wrapped with laminate sheath & ALF (short for ALuminum Foil) Note: Trim of 20mm on the (Yellow & White) pair for snag free separation on the wire insertion.

(Fig. C) After ALF are moved from each pairs, you'll be able to identify color for each wire & get ready for "Wire Terminal" insertion.

(Fig. A)



(Fig. B)



(Fig. C)



Step 1:

(Fig. A) IDC wire terminals.

(Fig. B) Place both or one wire terminal into the wire clip, also know as the "Wire Glider" designated slot to pre-align for wire insertion.



(Fig. B)



Step 2:

(Fig. A) Follow the color coded sticker on Wire Glider's hood & placing the conductors into the special designed chamfer slots. Important: Make sure keep all drain wires as straight as possible

(Fig. B) Close the hoods to secure conductors in place & gently push conductors through the terminal.

(Fig. C) Release the hood visual check all conductors are properly inserted through the terminal.

(Fig. A)



(Fig. B)



(Fig. C)



Step 3:

(Fig. A) Make sure all conductors feed through the terminals properly.

(Fig. B) Trim off the excessive conductor wires for an even parallel alignment. Repeat the same easy steps on other side of wire conductors.

(Fig. C) Take the HDMI connector & place between upper & lower housing.

(Fig. A)



(Fig. B)



(Fig. C)



Final Step:

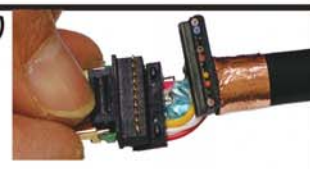
(Fig. A) Overlap both terminals on HDMI connector pins.

(Fig. B) Pinch both terminals down allows pins to penetrate through conductor's jacket.

(Fig. C) Check visually & make sure all pins are seated correctly before crimp.

(Fig. D) Slide the terminals into the pre-designated tracks on the crimp tool & press downward till you hear the "CLICK" sound & release.

(Fig. A)



(Fig. B)



(Fig. C)



(Fig. D)



(Fig. A) Now place the terminated cable into the secure locking hood.

(Fig. B) Screw on the embedded screws for completion.

(Fig. A)



(Fig. B)

